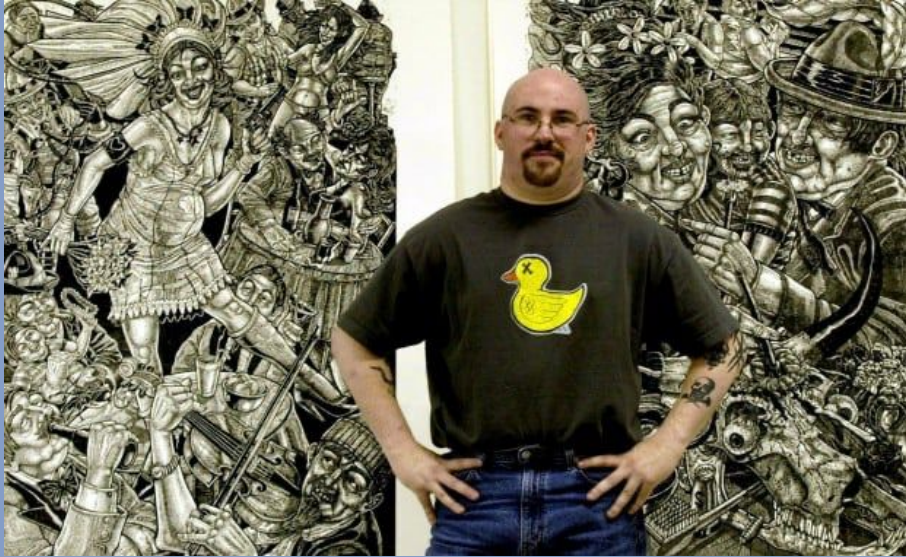




Research Presentation

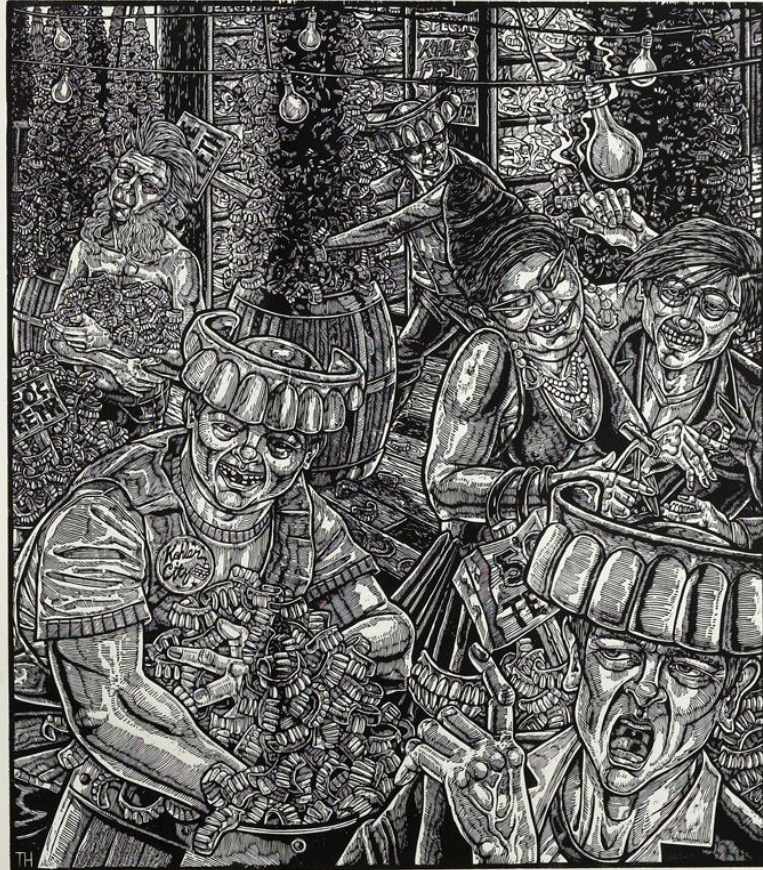
Jack Moors, FIN-115





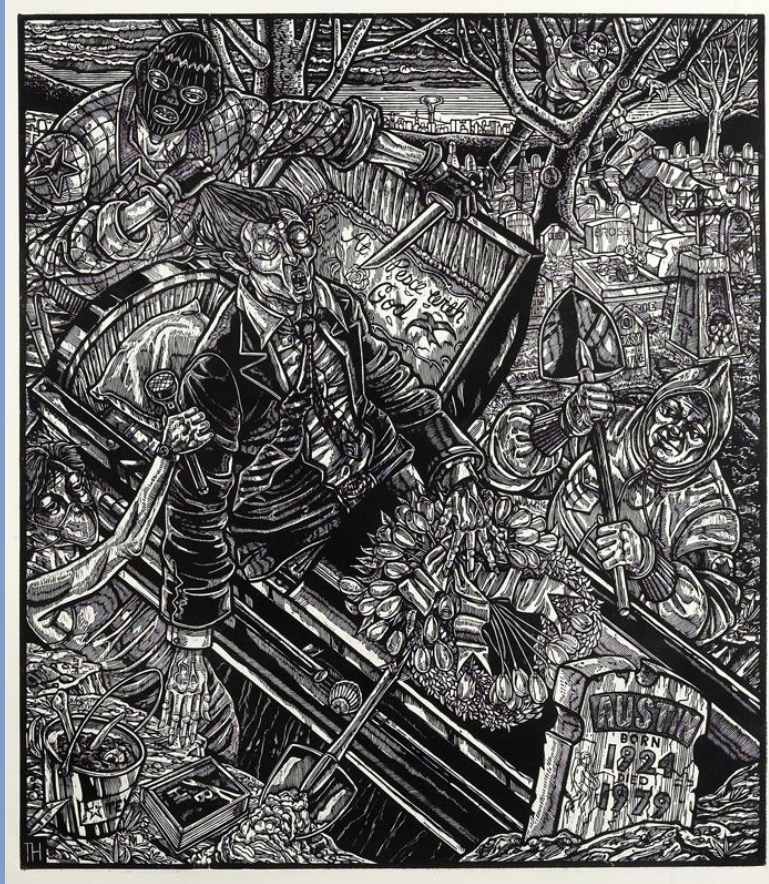
Tom Huck
American Printmaker in Missouri
Born 1971

Tom Huck



Kohler City Revisited, 1997, Woodcut, Edition of 25, 34" x 30"

Tom Huck



Exhuming Moses, 1997, Woodcut, Edition of 25, 34" x 30"

Tom Huck

'The Transformation of Brandy Baghead,'
Part 1: Beta Caro Teen Queen, Woodcut, 2008
All 3 parts, 96 x 96



Leon Loughridge
American artist from Northern New Mexico,
Lives in Denver



Leon Loughridge



(Left) *Ascension* (14/16), Woodcut, 11 x 11 in (Right) *Indian Summer*, 14/15 P, Woodblock Print, 9 x 7 in

Leon Loughridge



San Geronimo (12/16), woodcut, 12 x 9 in

Leon Loughridge



Brooklyn Bridge a la Cristo (12/23), woodcut

Leon Loughridge



Leon Loughridge



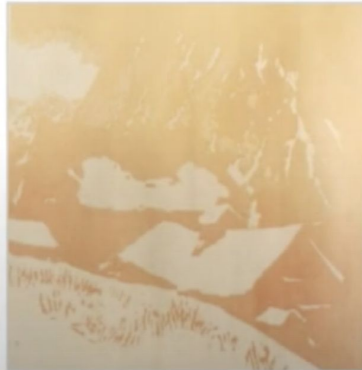
Plein air watercolor of the scene, to be used as a reference in the studio.



A color study for the full wood block version in progress of the original watercolor.



Three blocks were created with the drawing transferred to each.



The first two colors printed were the orange ochres as they are so prominent in the image.



The eighth color run was a rusty ochre on the top and a grayer ochre on the barns.



The ninth color run was a grayed cerulean blue. Note that areas of the barns have been carved to show texture and form.



Nancy Haver
American Artist

Nancy Haver



Schoodiic Point, (woodcut,) unknown size

Nancy Haver



Schoodiic Point, oil pastel

Nancy Haver



Nancy Haver



Thank you!